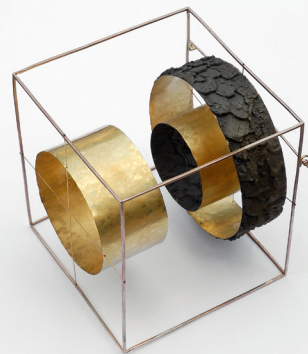


# European Triennial of Contemporary Jewellery 2014

Side events:

Lecture Day and Workshop



## LECTURE DAY

Saturday 25 October 2014, Anciens Abattoirs site

### JEWELLERY OBJECT: FOR YOUR EYES ONLY?

*Beneath the onlooker's gaze, a work calls forth sensations and generates meaning. The observer's sensibilities and imagination are stimulated by the object: its materials, dimensions, shapes, colours, surroundings... Brought together, all these elements cause the public both to understand the creator's personal interpretation of jewellery and to pause, reflect and form their own opinions.*

How does the public perceive this experience? And how does the creator apprehend and feel the viewer's gaze? These questions will be tackled in the lectures given alongside the exhibition.

**This day will be devoted to a series of lectures aimed both at professionals and at knowledgeable amateurs.**

### PROGRAMME

10.00: Registration

#### 10.15 : **SEMIOTICS OF CONTEMPORARY JEWELLERY: BETWEEN PHOTOS AND OBJECTS**

**Maria Giulia Dondero**, Semiotician, University of Liège (BE), 1st Vice-President of the French Semiotics Association (AFS), Vice-President of the International Association for Visual Semiotics (IAVS), participant in Groupe  $\mu$  and, since 2009, researcher with the National Scientific Research Fund (FNRS).

11.00: Questions and answers

#### 11.15 : **THE PLEASURE OF PLATINA**

**Sofia Bjorkmann**, Jewellery creator and Director of the Platina Gallery, Stockholm (S).

*They say that sight is the most developed of the senses. They also say that utility and art don't mix. These are issues that concern me in my daily encounters with photographs of jewellery. I want to share with you my taste for jewellery as art, both as an artist myself and as a gallery owner. I will also be explaining how a project about food opened my eyes.*

12.00: Questions and answers

12.30: Lunch + unguided viewing of the Triennial of Contemporary Jewellery

#### 14.15 : **JEWELLERY AND GENDER**

**Karen Pontoppidan** (DE), a Danish jewellery maker living in Munich (D), is regularly invited to speak at seminars. Since 2006, she has been teaching the Jewellery and Corpus course at Ädellab, Stockholm.

*Starting from the principle that jewellery is the earliest evidence of human civilisation, and that different cultures have different approaches to gender, Karen Pontoppidan will demonstrate that the process of creating jewellery is directly linked to this issue.*

#### 15.00 : **DISCUSSION**

Mediator: Carole Schuermans, Director of the arts centre Maison Particulière, Brussels.

**Simultaneous interpretation in Dutch, English and French.**

To register:

Fill in the registration form on the next page. Maximum attendance: 80 people.

30 euros

15 euros for WCC-BF members and students aged below 27.

Free for artists taking part in the Triennial.

## WORKSHOP

Saturday and Sunday 15-16 November 2014, Anciens Abattoirs site

### Creating jewellery in resin, latex and/or silicon



Photo: Claire Lavendhomme

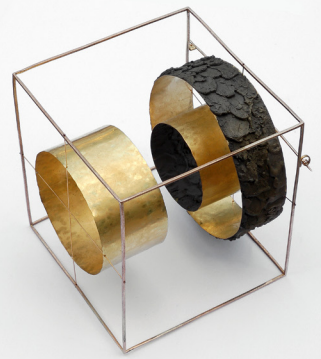
Claire Lavendhomme, an artist who is taking part in the Triennial, will help you to discover these three materials and create a piece of jewellery. With you, she will try out the various techniques that are applied to them and she will encourage you to familiarise yourself with the colours, transparencies, opacities and light effects that they offer.

#### To register:

Fill in the registration form on the next page. Maximum attendance: 10 participants.

180 euros (including lunch)

150 euros for WCC-BF members (including lunch)



### Anciens Abattoirs site

17/02, rue de la Trouille. 7000 Mons (Belgium)  
T : +32-(0)65 84 64 67 • F : +32-(0)65 84 31 22  
wccbf@wcc-bf.org • www.wcc-bf.org

## REGISTRATION FORM

### Lecture Day

Registration closes on 10 October 2014

- I am an artist taking part in the Triennial (free)
- I am a WCC-BF member or a student aged under 27 (and will transfer 15 euros)
- I do not qualify for a reduction (and will transfer 30 euros)

Surname and given names: .....

.....

Full address: .....

.....

Telephone: .....

E-mail: .....

Please send the completed form to **Mélissa Terranova at the WCC-BF secretariat:**

melissaterranova@wcc-bf.org - +32 (0)65 84 64 67  
Site des Anciens Abattoirs. Rue de la Trouille, 17/02 - 7000 Mons (B)

**Payments to the WCC-BF bank account, to be received by 13 October 2014:**

IBAN : BE23 0682 0278 4991 - BIC : GKCC BEBB

The registration will become valid as soon as payment has been received by the WCC-BF account. When transferring, please include the message : **Conférences triennale 2014** as appropriate. No reimbursements will be made for cancellations received after **5 November 2014**.

## REGISTRATION FORM

### Workshop

Registration closes on 31 October 2014

- I am a WCC-BF member or a student aged under 27 (and will transfer 150 euros)
- I am not a WCC-BF member (and will transfer 180 euros)

Surname and given names: .....

.....

Full address: .....

.....

Telephone: .....

E-mail: .....

Please send the completed form to **Mélissa Terranova at the WCC-BF secretariat:**

melissaterranova@wcc-bf.org - +32 (0)65 84 64 67  
Site des Anciens Abattoirs. Rue de la Trouille, 17/02 - 7000 Mons (B)

**Payments to the WCC-BF bank account, to be received by 5 Novembre 2014:**

IBAN : BE23 0682 0278 4991 - BIC : GKCC BEBB

The registration will become valid as soon as payment has been received by the WCC-BF account. When transferring, please include the message : **Workshop bijou** as appropriate. No reimbursements will be made for cancellations received after **13 October 2014**.